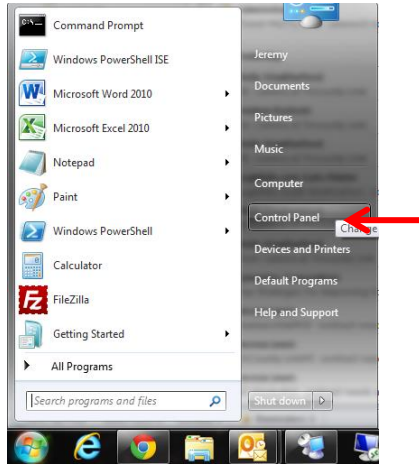
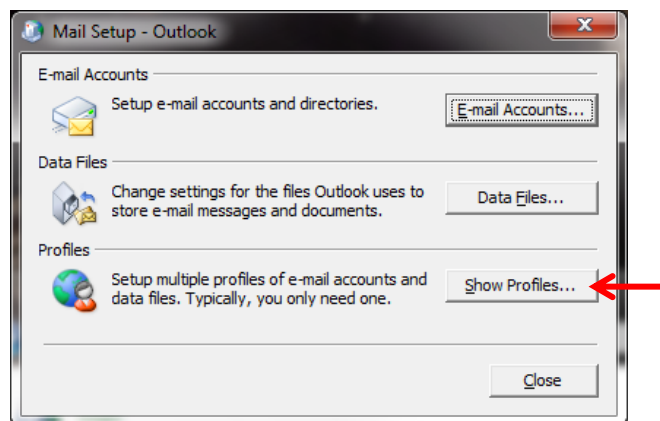
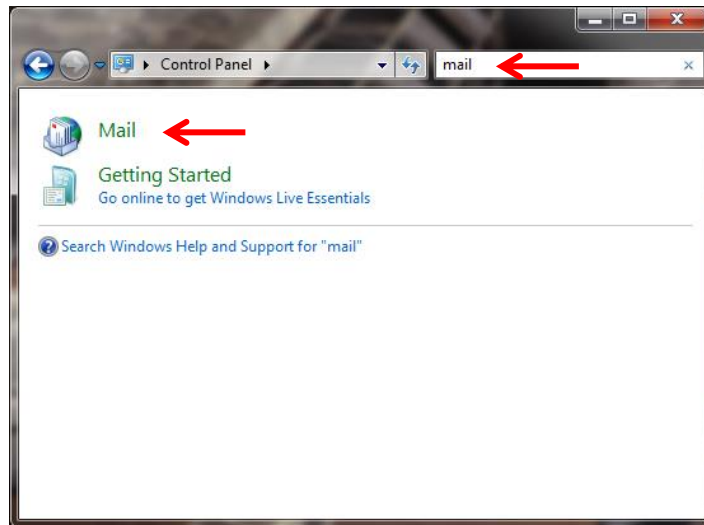


Outlook Setup with Emailnacloud

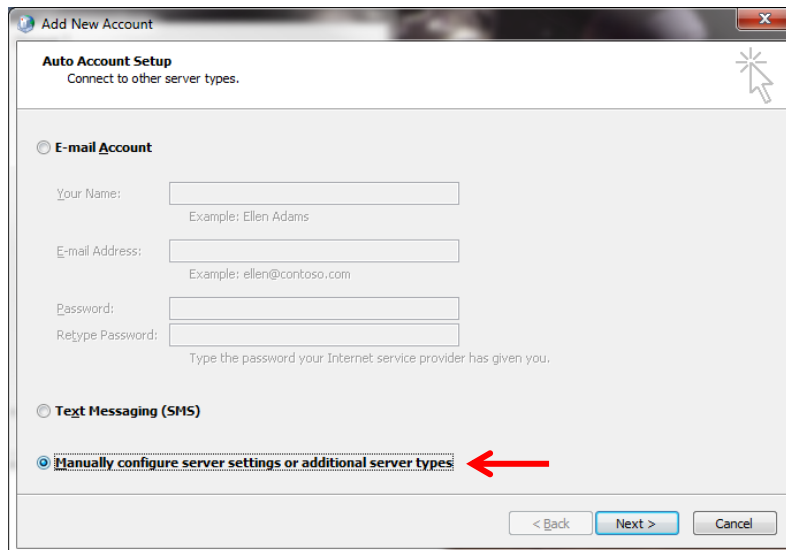
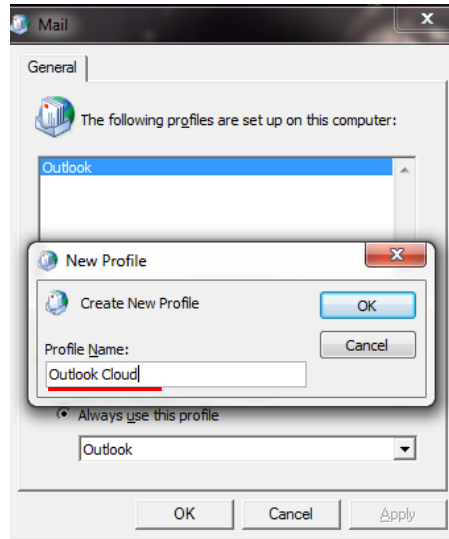
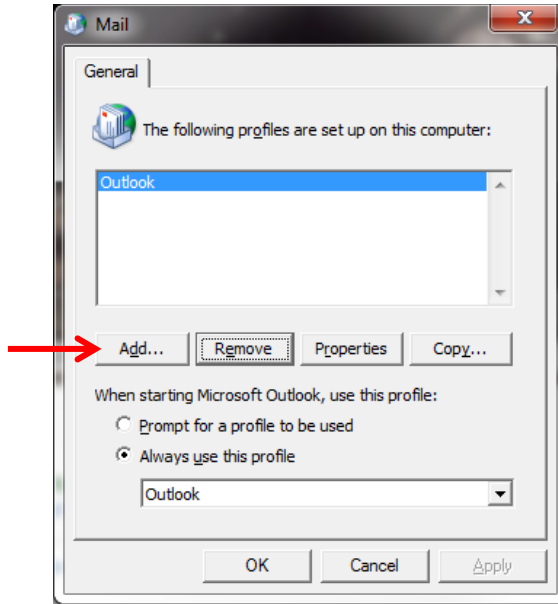
Open Control Panel from the start menu

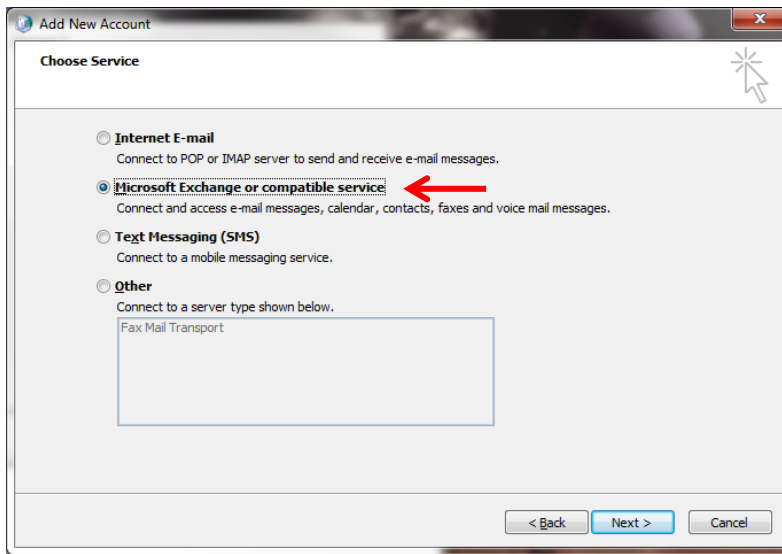


In the Control Panel search Pane Type "mail", then click the mail icon.



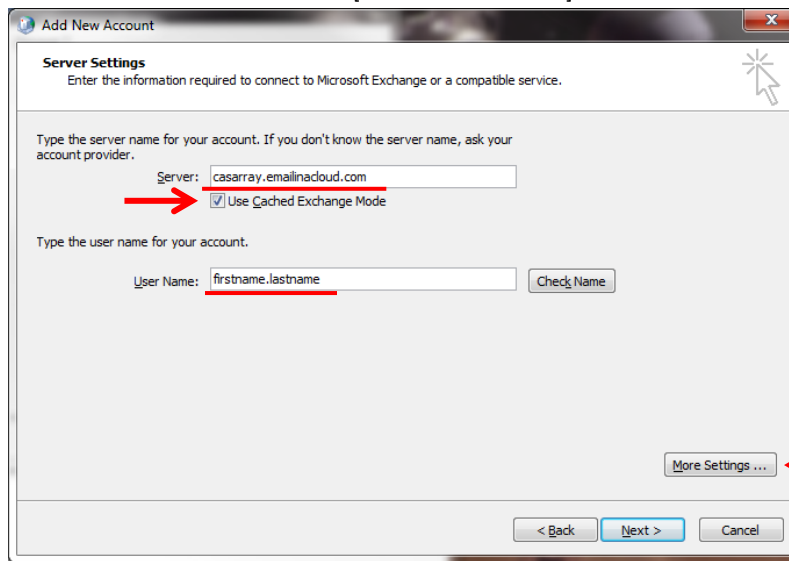
Click "Add" to add a new profile
Do not remove the old profile.



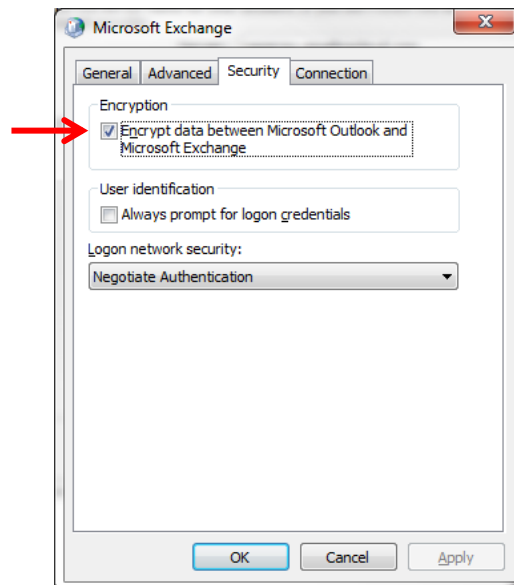


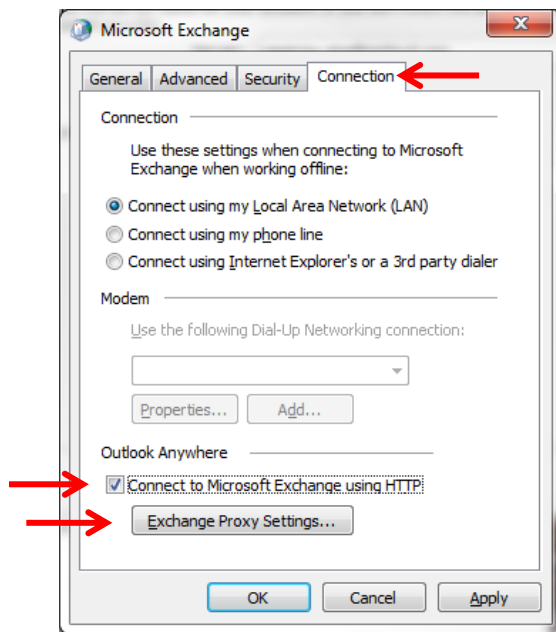
Server: [casarray.emailinacloud.com]

Username: [firstname.lastname]

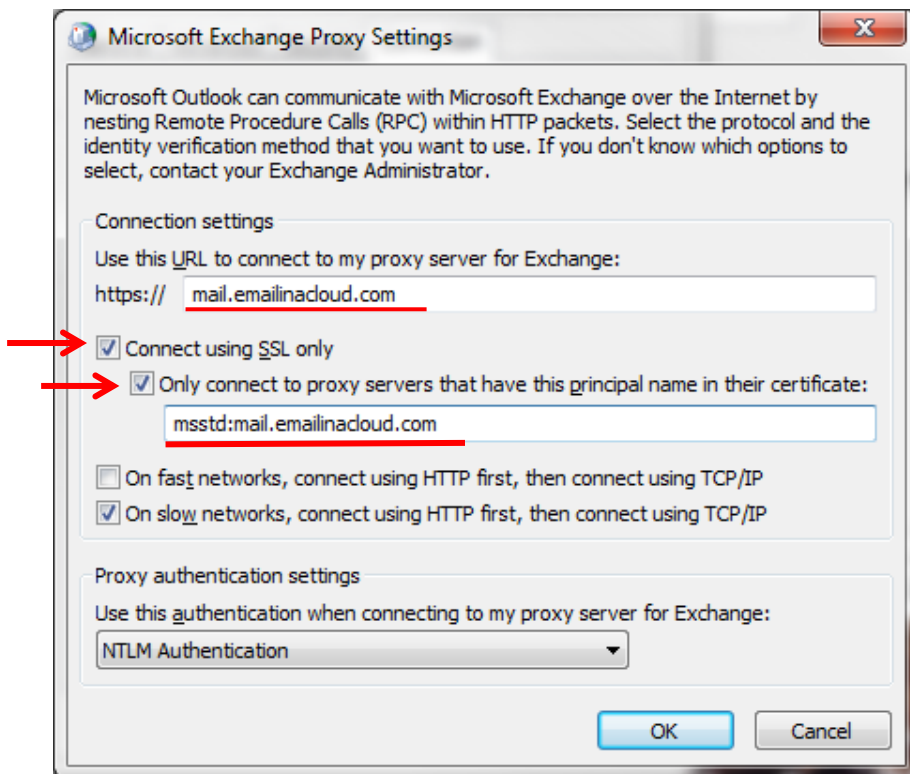


For Outlook 2003

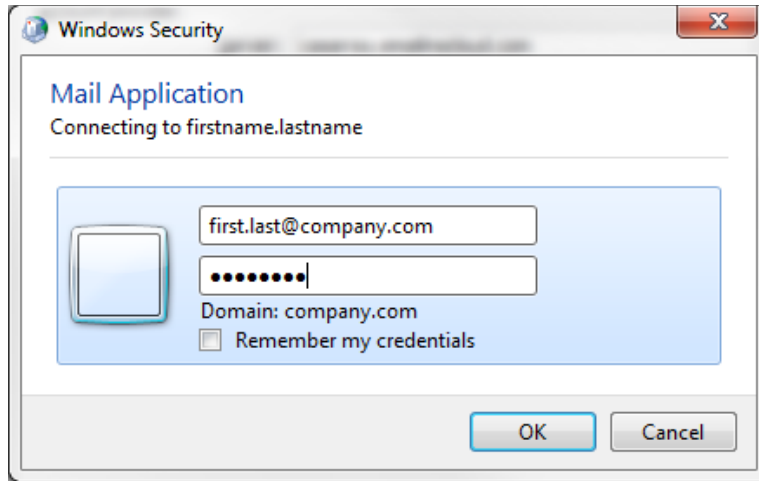




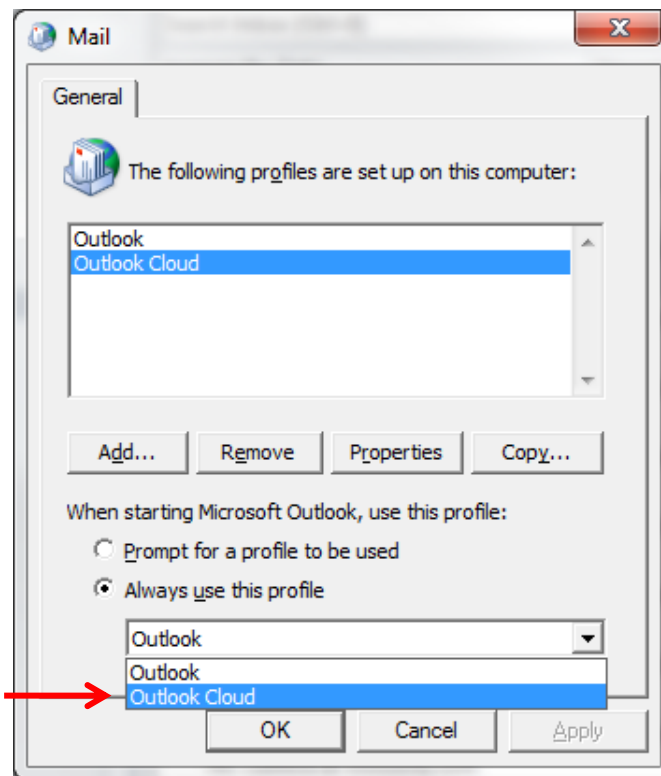
Enter this in the 2 fields
frist feild [**mail.emailinacloud.com**]
second field [**msstd:mail.emailinacloud.com**]



UserName: `firstname.lastname@company.com`



Select to always use the new profile you created.



You will notice when Outlook opens, it will take some time to download a copy of your mailbox. At the Bottom right corner, it shows the status of this process.

